



## **CHANDELIER – PENDANT INSTRUCTIONS**

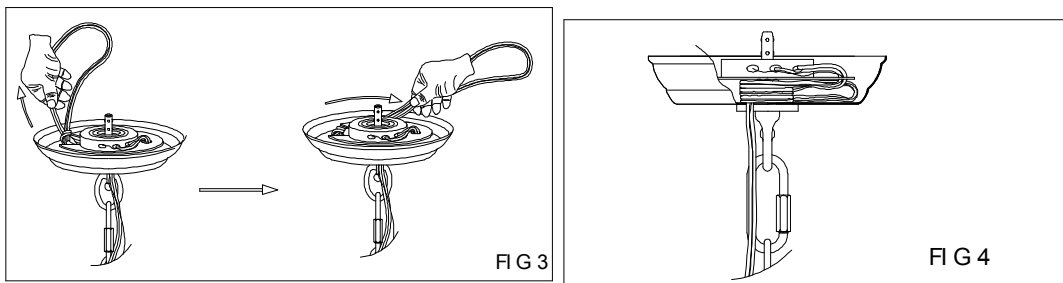
**Option 1.** -- Leave the chain / wire length as is (at longest length) and make no adjustment to the wire length – no re-wiring is needed for this option - (consumer can use the chain link hook for excess chain) – proceed to the section - **INSTALL THE FIXTURE.**

**Option 2 - Adjust the height of the chain / wrapping around the extra wire under the wiring plate.**

- a) To adjust chain's length, open the adjustable link from chain, using 2 sets of pliers, twist open one chain link at the place of your need to adjust the chain length. Put a piece of cloth between the pliers jaws and the chain link to prevent scratching the link finish, then use the adjustable link connect the loop of tube assembly and the chain end, close the adjustable link. **(Refer fixture diagram)**
- b) Pull the extra wire up into the canopy, and wrap the excess wire around the bushing underneath the round plate. The maximum length of wires to be wrapped under the plate is 24 inches. Make sure the wrapped wires are underneath the round plate Refer **(Fig.3)** and **(Fig.4)**

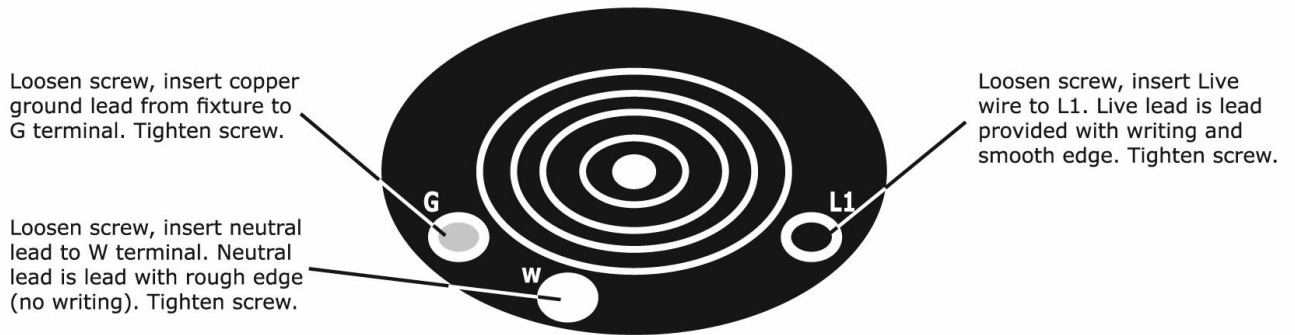
**CAUTION:** Make sure to leave the wire longer than the chain link, so the chain link can support the weight of fixture when assembled on ceiling.

c) After making the necessary chain length and wire height adjustments, your fixture is ready to be **installed – proceed to INSTALL THE FIXTURE**



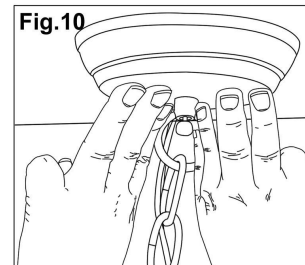
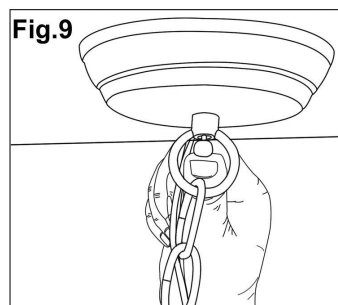
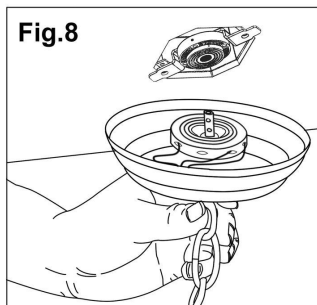
### **Option 3 -**

**Adjust the height of the chain as described under Option 2 – shorten the wire and make new electrical connections on the male plug. Set screw Torque – 3.6 lb-in.**



Wire strip length = 3/16". Make sure wire is fully inserted into terminal - no exposed copper strands - only the jacketed cord should be visible.

### **Install the fixture –**



1. Line up the male plug on the fixture with the female device already installed in the outlet box.
2. While keeping the button pushed, insert the fixture male plug into the female device.
3. Let go of the button and push up on the fixture canopy. **FIRMLY PRESS** in the center of the canopy using your fingers, Listen for the click. The fixture will be installed when you hear the click and the push button is released. The male plug on the fixture is provided with a safety feature. If not fully inserted into the female device, the fixture may only have the mechanical support, but not the electrical connection. If this occurs, press the mounting release button again and press firmly on the fixture canopy as shown – and listen for the click.